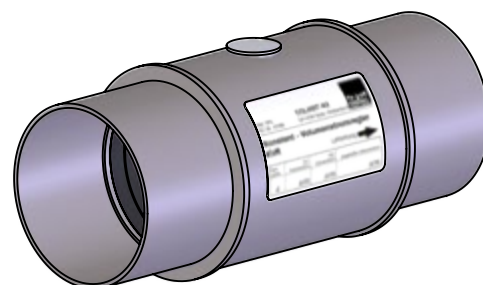
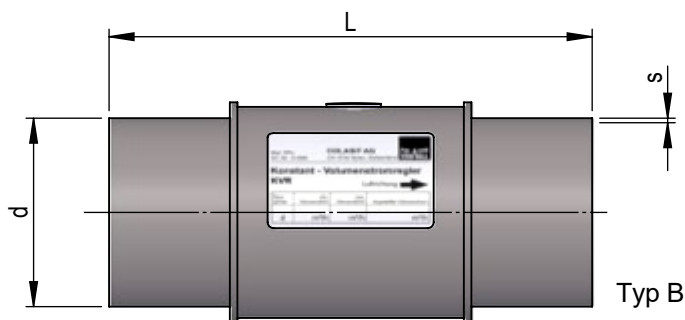
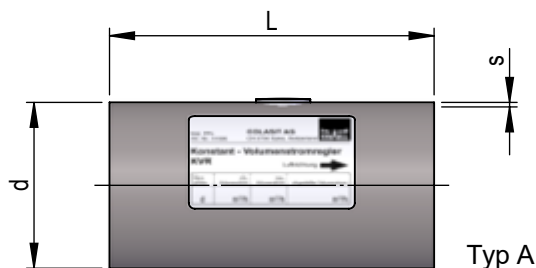


## Constant volume flow controller CVFC

Dimension drawing	1041686
Housing material	PPs
Regulator material	PPe; Psi; PU; V2A
Operating pressure	+/-1500 Pa, 40°C



NG	L mm	S mm	Type	Item No.	V min m <sup>3</sup> /h	V max m <sup>3</sup> /h
90	190	3	A	41596	13	110
110	215	3	A	41597	20	170
125	320	3	B	41598	35	270
180	250	3	A	41600	50	440
200	370	3	B	41601	75	680
250	420	3.5	B	41602	125	1060

Colasit constant volume flow controllers are maintenance-free, mechanical controllers without auxiliary power for maintaining constant volume flows in industrial ventilation systems. They regulate volume flows independently of pressure to previously set target values and keep these constant.

The controllers are installed in a pipe sleeve made of flame-retardant polypropylene PPs.

Installation in the ventilation duct is carried out as standard with pipe sockets. Alternatively, the installation can also be carried out with flanges or welding sleeves.

On request, the volume flow can be preset at the factory.

- Maintenance-free
- Any installation position
- Differential pressure range: 30 Pa to 300 Pa
- Accuracy  $\pm 5\%$  to  $\pm 10\%$  deviation referred to the maximum volume flow setpoint value

Edition 2026 • Subject to alteration • Copyright by COLASIT AG Spiez

COLASIT Holland B.V.

Plastic construction • Larenweg 56 • NL-5234 KC 's-Hertogenbosch

Phone +31 (0)73 641 83 15 • verkoop@colasit.nl

www.colasit.nl

Competence in plastics. Worldwide.

